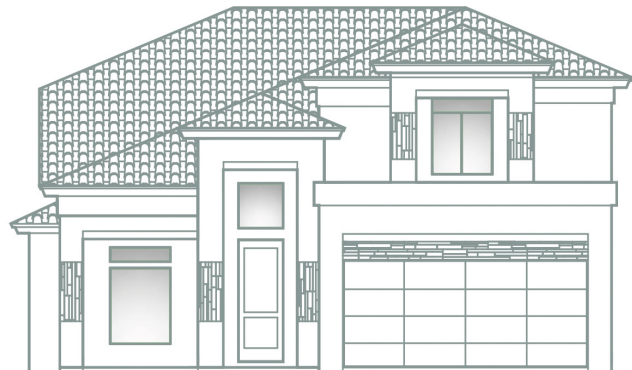


TROPICANA HOMES



TORI - A

**No shingle roofs in Mission Ridge, only clay tile or flat roof options available.*



TORI - B

**Exclusive floor plans for Mission Ridge and Peyton Communities*

Updated: May/18/2020

All square footage figures and room dimensions are approximate. Specifications and prices subject to change without notice. This plan is subject to minor modifications by builder or by code requirements. This presentation constitutes intellectual property of Tropicana Homes. Any copying, reproducing or use of this information without the written authorization from Tropicana Homes is strictly prohibited. Copyright 2003, 2011.



TORI - C



TORI - FLAT

TORI

2,213 Approx. Sq. Ft.

DIMENSIONS 36'W x 51'-5"D

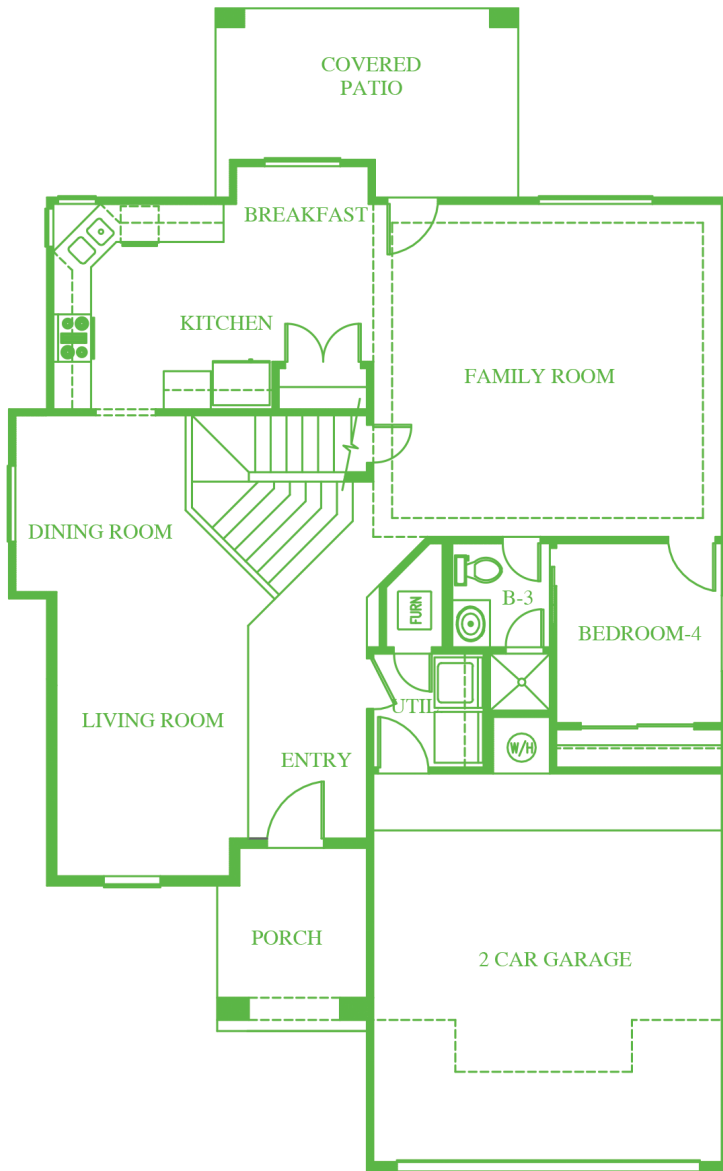
BEDROOMS: 4

BATHROOMS: 3

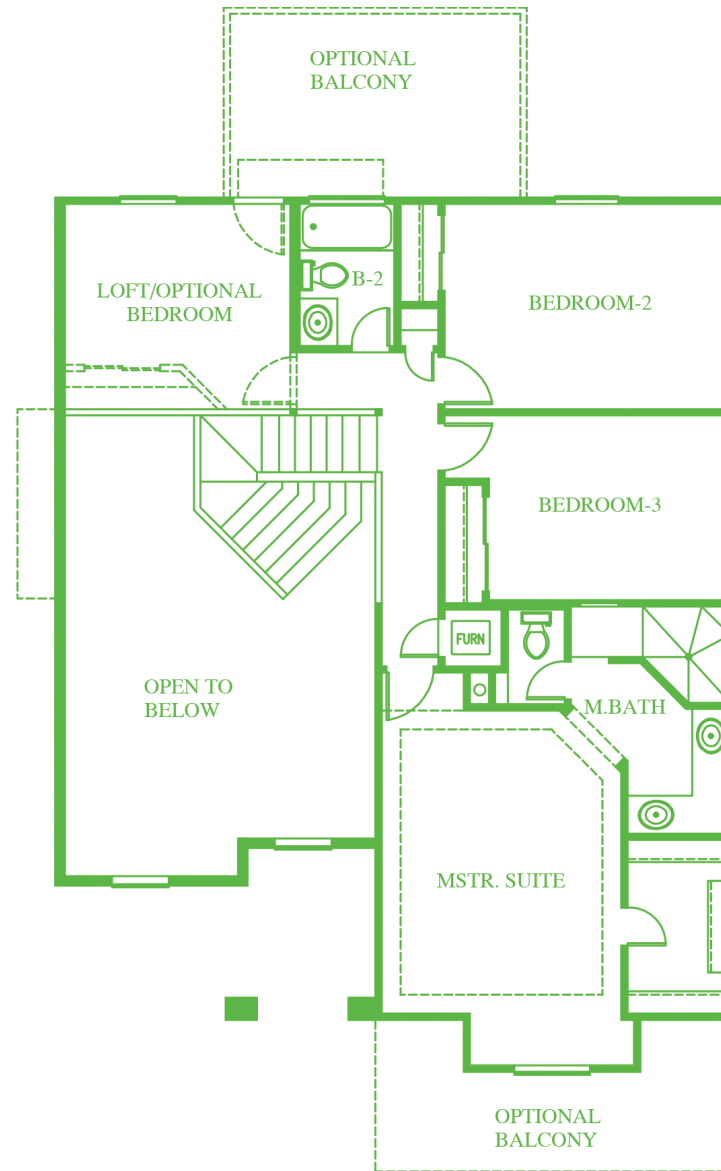
GARAGE: 2

www.tropicanahomes.com/floorplans/tori-2



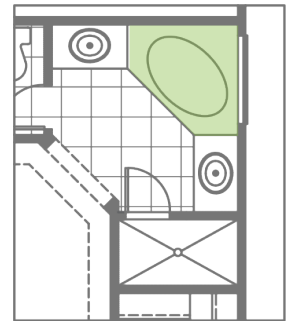


FIRST FLOOR



SECOND FLOOR

BUBBLE TUB OPTION



OFFICE OPTION

