

TOPAZ FLAT

1,761 Approx. Sq. Ft.
DIMENSIONS 34'-7"W x 44'-5"D

BEDROOMS: 4
BATHROOMS: 2.5
GARAGE: 2

www.tropicanahomes.com



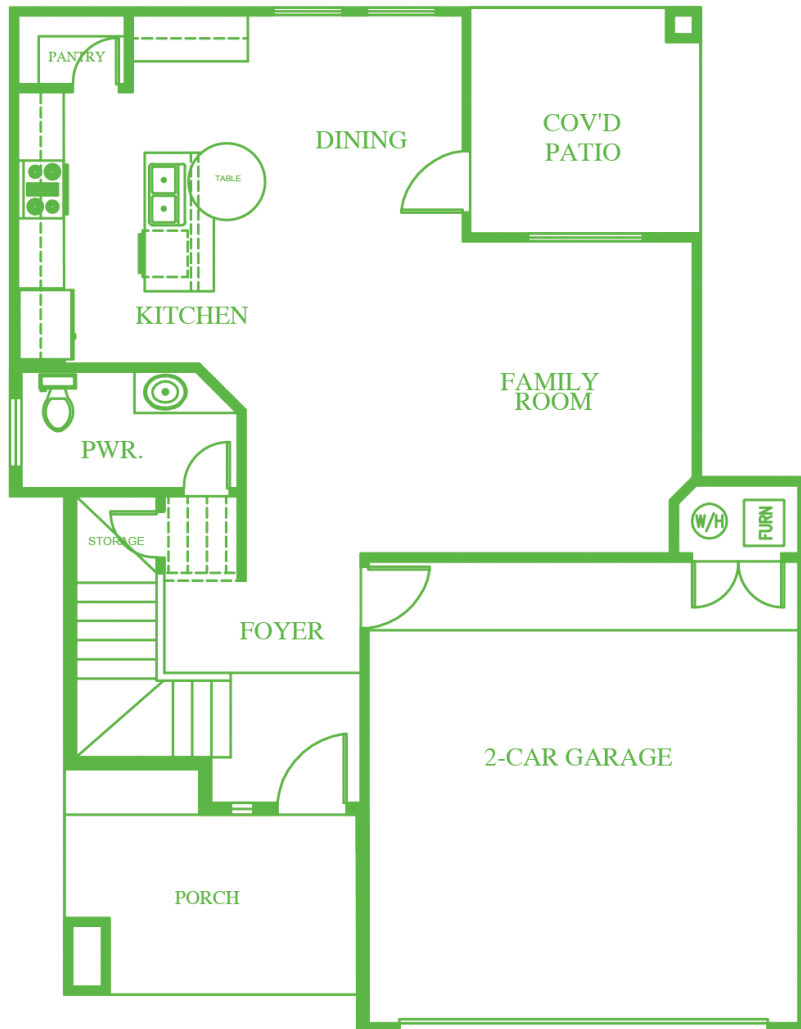
**Exclusive floor plans for Mission Ridge and Peyton Communities*

Updated: March / 19 / 20

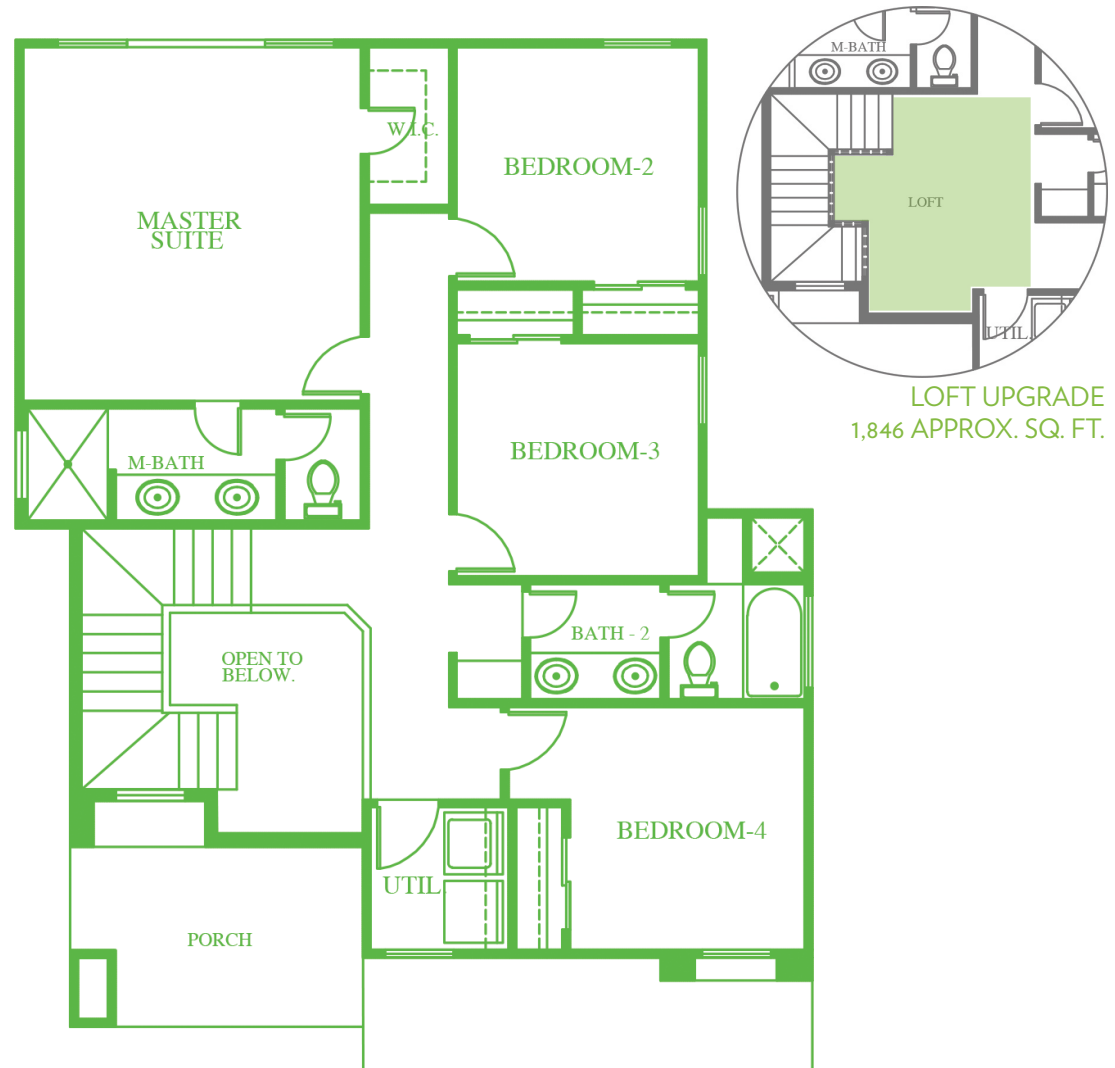
All square footage figures and room dimensions are approximate. Specifications and prices subject to change without notice. This plan is subject to minor modifications by builder or by code requirements. This presentation constitutes intellectual property of Tropicana Homes. Any copying, reproducing or use of this information without the written authorization from Tropicana Homes is strictly prohibited. Copyright 2003, 2011.



FIRST FLOOR



SECOND FLOOR



TOPAZ
1,761 Approx. Sq. Ft.

BEDROOMS: 4
BATHROOMS: 2.5
GARAGE: 2

DIMENSIONS 34'-7"W x 44'-5"D