

TRADITIONAL

VIRGINIA

2,336 Approx. Sq. Ft.
DIMENSIONS 31'-8"W x 50'-10" D

BEDROOMS: 4
BATHROOMS: 2.5
GARAGE: 2

<http://tropicanahomes.com/floorplans>

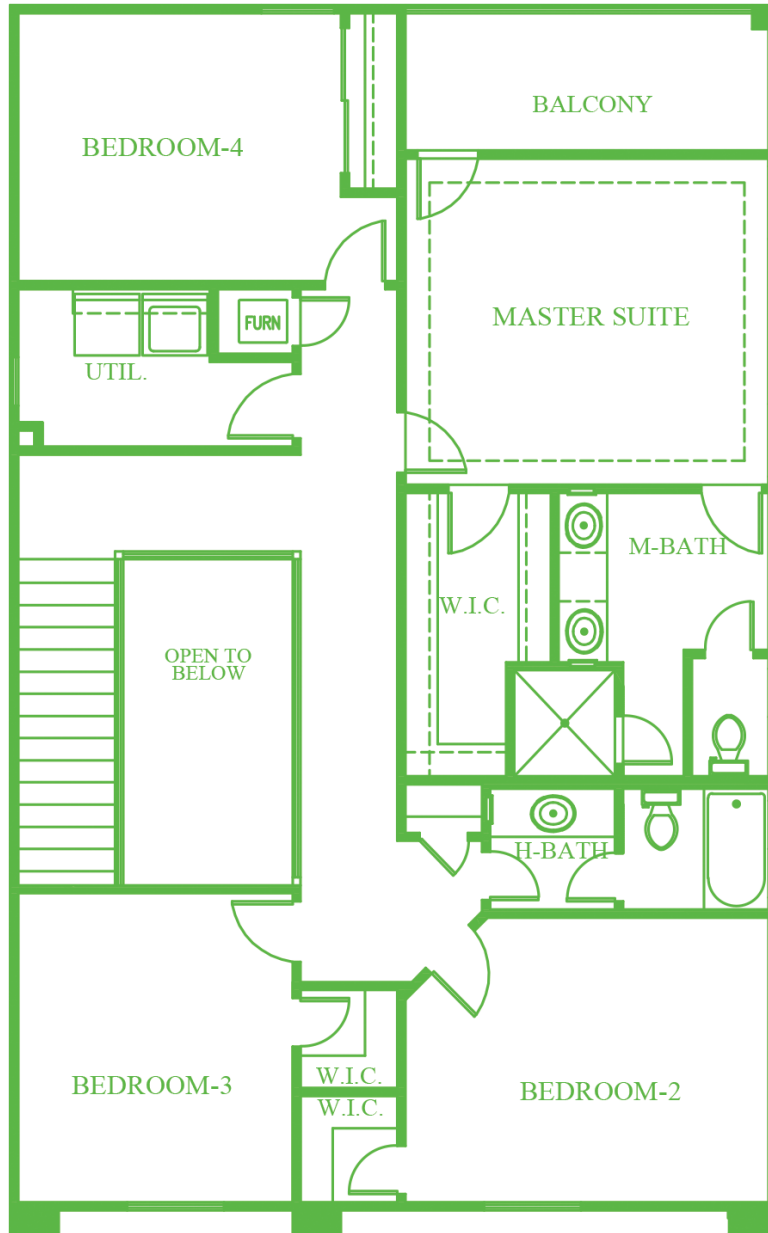


Updated: February / 12 / 21

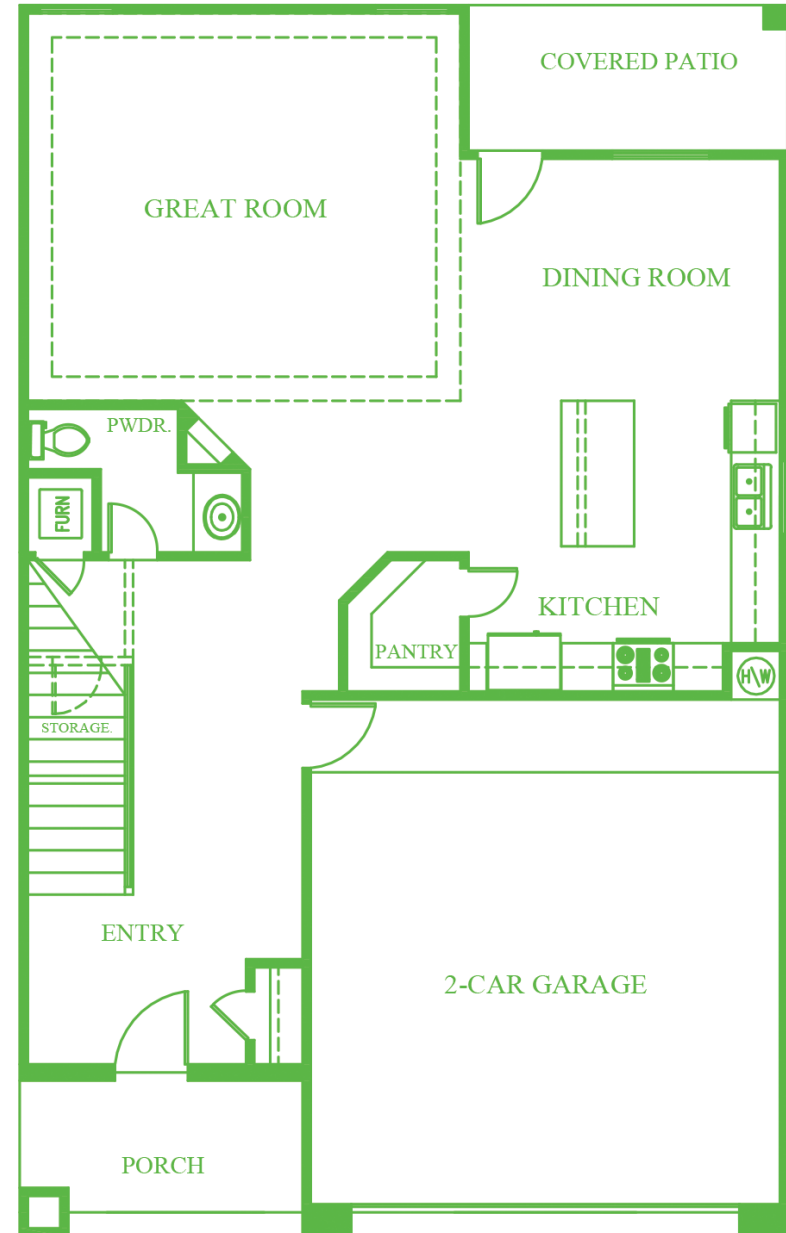
All square footage figures and room dimensions are approximate. Specifications and prices subject to change without notice. This plan is subject to minor modifications by builder or by code requirements. This presentation constitutes intellectual property of Tropicana Homes. Any copying, reproducing or use of this information without the written authorization from Tropicana Homes is strictly prohibited. Copyright 2021 Tropicana Homes



SECOND FLOOR



FIRST FLOOR



VIRGINIA
2,336 Approx. Sq. Ft.

BEDROOMS: 4
BATHROOMS: 2.5
GARAGE: 2

DIMENSIONS 31'-8"W x 50'-10" D