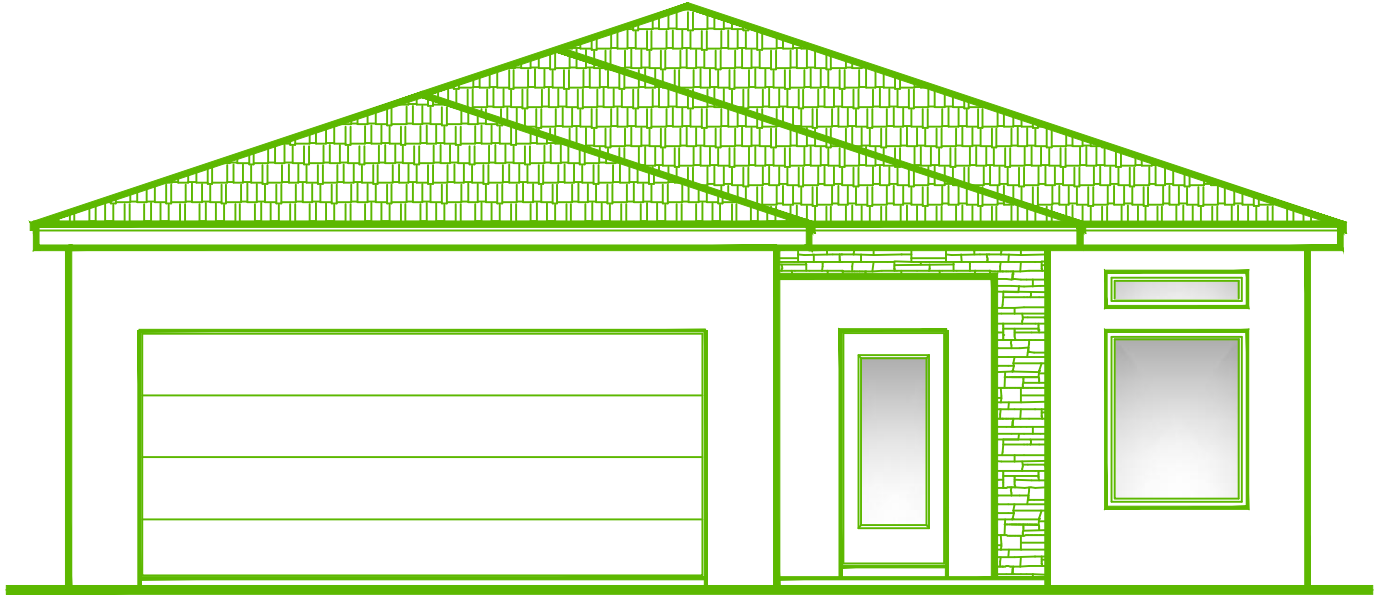
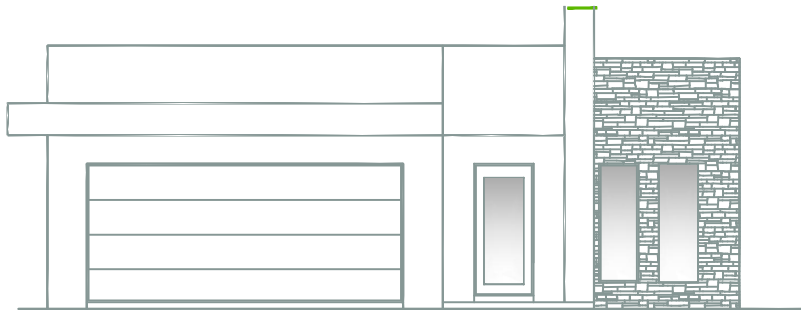


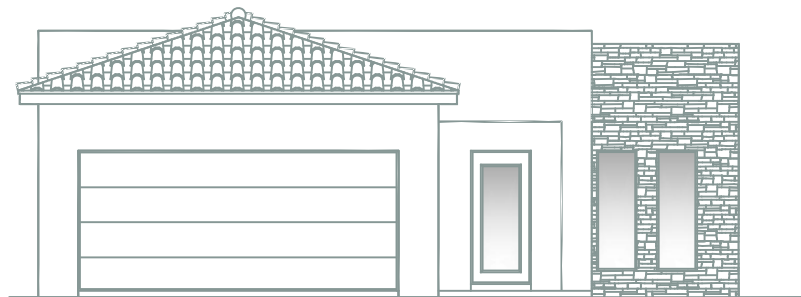
# TROPICANA HOMES



Traditional



Modern



Flat with Clay Tile

## PEARL

1,411 Approx. Sq. Ft.

DIMENSIONS 35'W x 60'D

BEDROOMS: 3

BATHROOMS: 2

GARAGE: 2

[www.tropicinahomes.com/floorplans](http://www.tropicinahomes.com/floorplans)

Updated: May / 18 / 22

All square footage figures and room dimensions are approximate. Specifications and prices subject to change without notice. This plan is subject to minor modifications by builder or by code requirements. This presentation constitutes intellectual property of Tropicana Homes. Any copying, reproducing or use of this information without the written authorization from Tropicana Homes is strictly prohibited. Copyright 2021 Tropicana Homes.



