

TROPICANA HOMES



Traditional A

**No shingle roofs in Mission Ridge, only clay tile or flat roof options available.*



Traditional B



Modern



Flat with clay tile

TORI

2,213 Approx. Sq. Ft.

DIMENSIONS 36'W x 51'-5"D

BEDROOMS: 4

BATHROOMS: 3

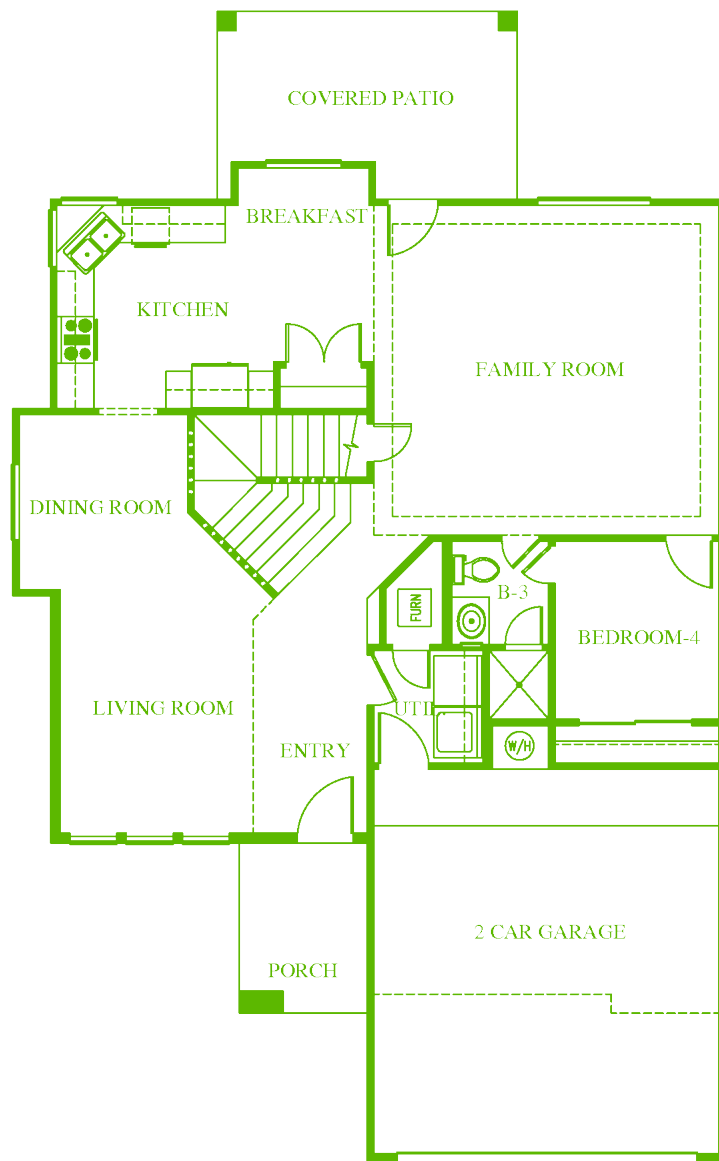
GARAGE: 2

www.tropicanahomes.com/floorplans

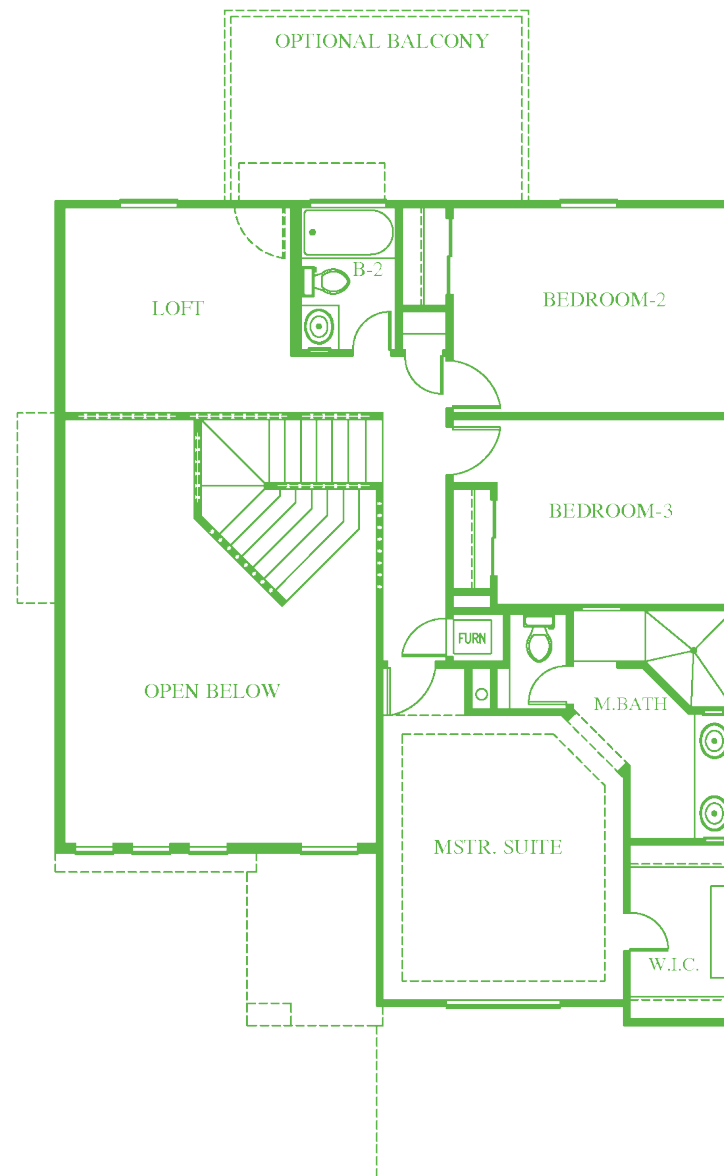


Updated: April / 12 / 2022

All square footage figures and room dimensions are approximate. Specifications and prices subject to change without notice. This plan is subject to minor modifications by builder or by code requirements. This presentation constitutes intellectual property of Tropicana Homes. Any copying, reproducing or use of this information without the written authorization from Tropicana Homes is strictly prohibited. Copyright 2021 Tropicana Homes



FIRST FLOOR



SECOND FLOOR

OFFICE OPTION

