

TROPICANA HOMES




**No shingle roofs in Mission Ridge, only clay tile or flat roof options available.*

JANIS

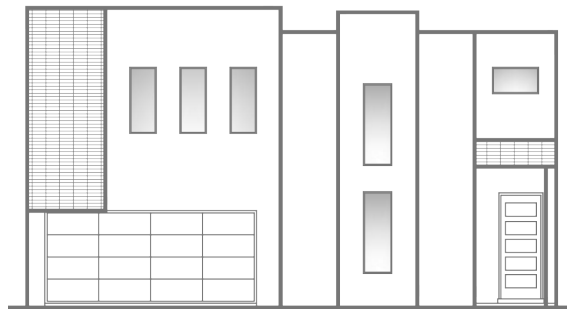
2,155 Approx. Sq. Ft.
DIMENSIONS 40'W x 47'-4" D

BEDROOMS: 4
BATHROOMS: 2.5
GARAGE: 2

<http://tropicanahomes.com/floorplans/janis-3>



TRADITIONAL CENTER ENTRY



MODERN RIGHT ENTRY



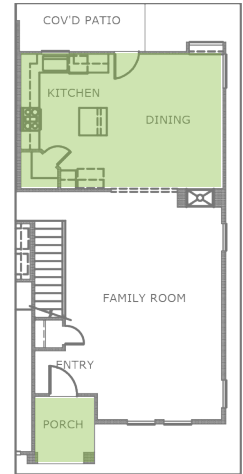
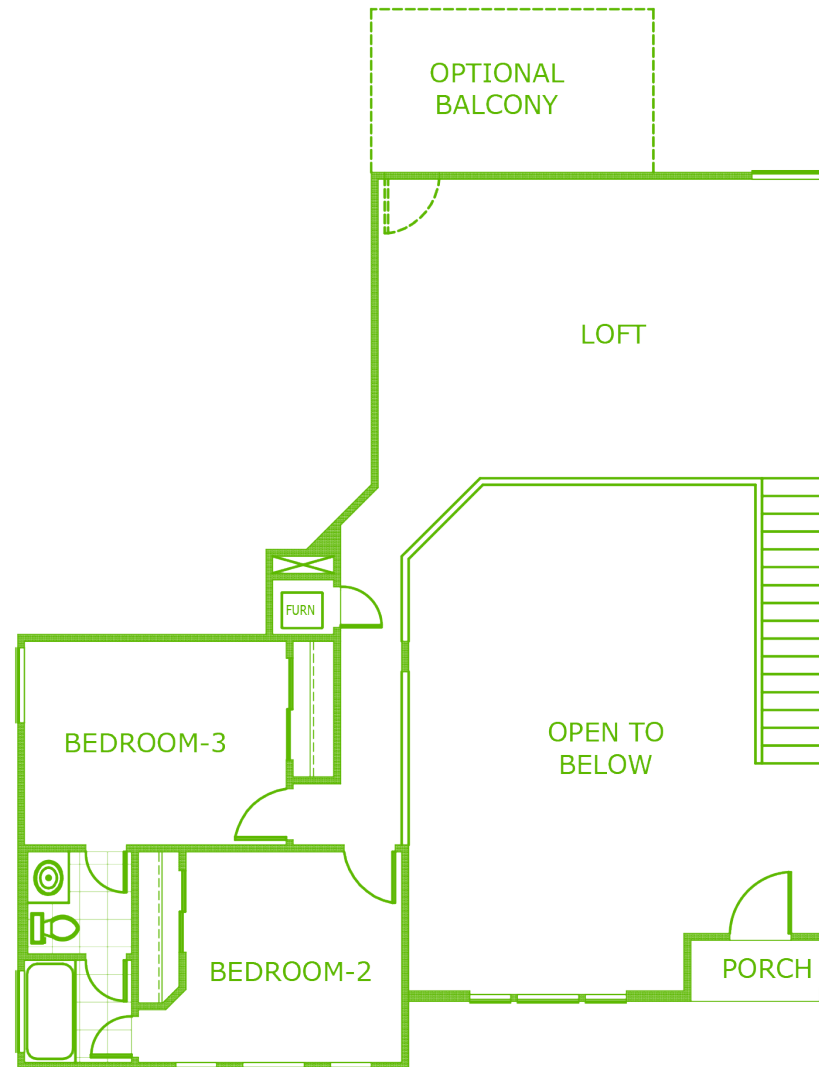
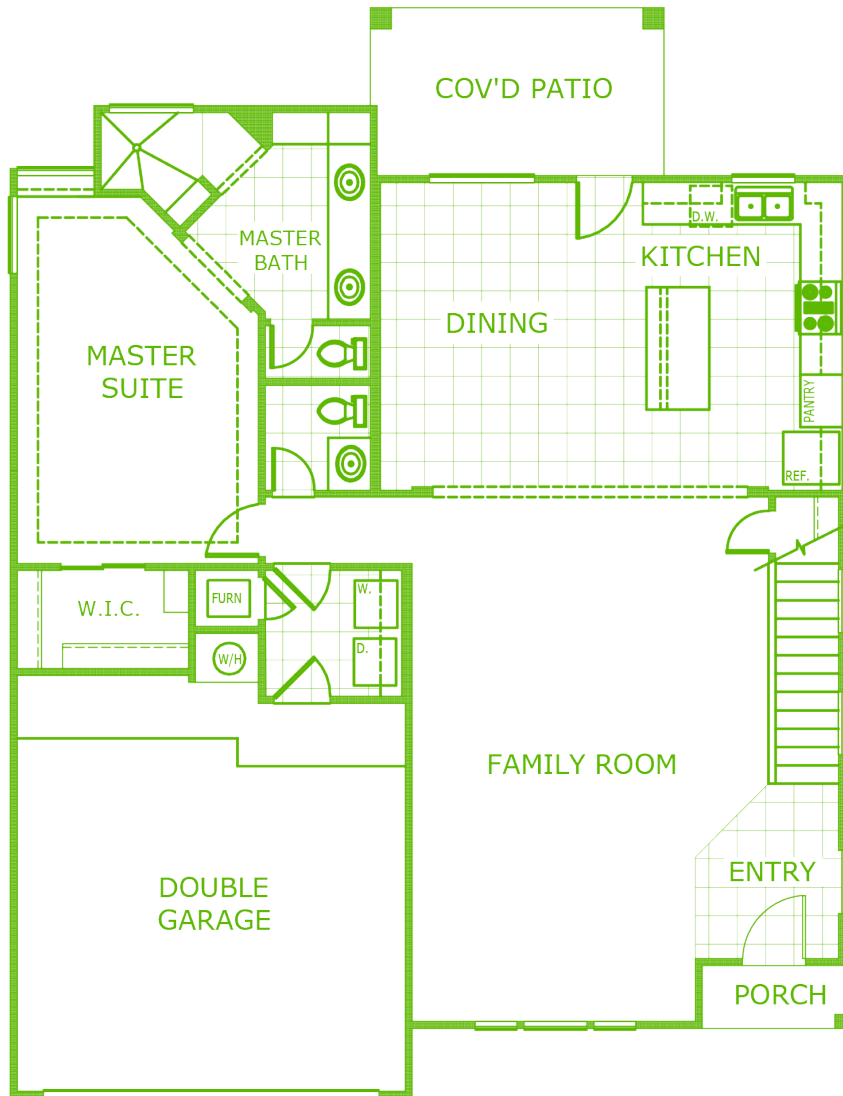
MODERN CENTER ENTRY

FIRST FLOOR

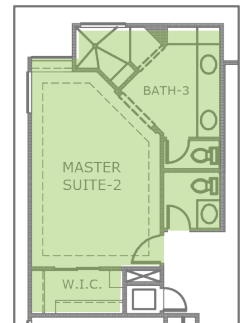


SECOND FLOOR

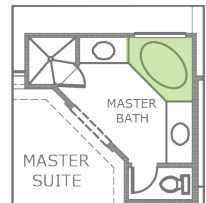
CENTER ENTRY
NEW KITCHEN & DINING
OPTION



JANIS - 2,546 SQ. FT.
2ND MASTER UPGRADE



BATH TUB
OPTION 1



JANIS
2,155 Approx. Sq. Ft.

BEDROOMS: 4
BATHROOMS: 2.5
GARAGE: 2

DIMENSIONS 40'W x 47'-4" D